



Come, join the Future

**DESIGN
ENGINEERING
MANAGEMENT**

PROSPECTUS 2022



**The world of work is
changing rapidly.**

**So is the world of business,
technology and jobs.
Education must take bold
strides to walk towards a
new landscape.**

At JKLU, we are excited about shaping this horizon and are committed to creating professionals of the future.





“We offer our students an education that is contemporary, relevant and combines the best of academic pedagogy along with application-led practical experience.”

We as an Industrial Conglomerate are strongly committed to education and meritocracy in the country for more than 100 years.

Higher education is the foundation of a productive career and fulfilling life. Its purpose is to help students discover their strengths, build skills that enable them to achieve their goals, and foster relationships with peers and faculty that will continue to support them over the years.

At JK LakshmiPat University, we are passionate about building a high-quality institution that enables students to embark on a journey of transformation. Our rigorous pedagogy, committed faculty body and stellar academic advisory board ensure that our curriculum, teaching methods and learning outcomes are consistently being benchmarked against leading institutions.

Even as we are proud of our early achievements, we have ambitious plans for growth.

Much as we are excited about our student's growth, we as an institution as well, have an unyielding zeal for continuous improvement and progress.

It is a pledge we make to our students. Join us to live your change.

Shri Bharat Hari Singhania

Chancellor JKLU

President, JK Organisation



“JKLU has been established with the vision of world class education to cater needs of students across the county, We offer new edge multidisciplinary programs in Engineering, Management and Design.”

I have seen the transformation of JKLU to one of top emerging universities in india.

“Opportunity to pursue cutting-edge, inter-disciplinary B.Tech. programmes; emphasis on AI, ML design & business; doing a semester at leading US universities and IIT’s; benefit of project based learning from olin college of engineering, USA; learning the skills of critical thinking, communication & problem-solving are some unique aspects of JKLU. Liberal scholarships bring it within reach of any high-performing student. It is an excellent option for students who have not got their choice at iit’s.

Prof. Dheeraj Sanghi

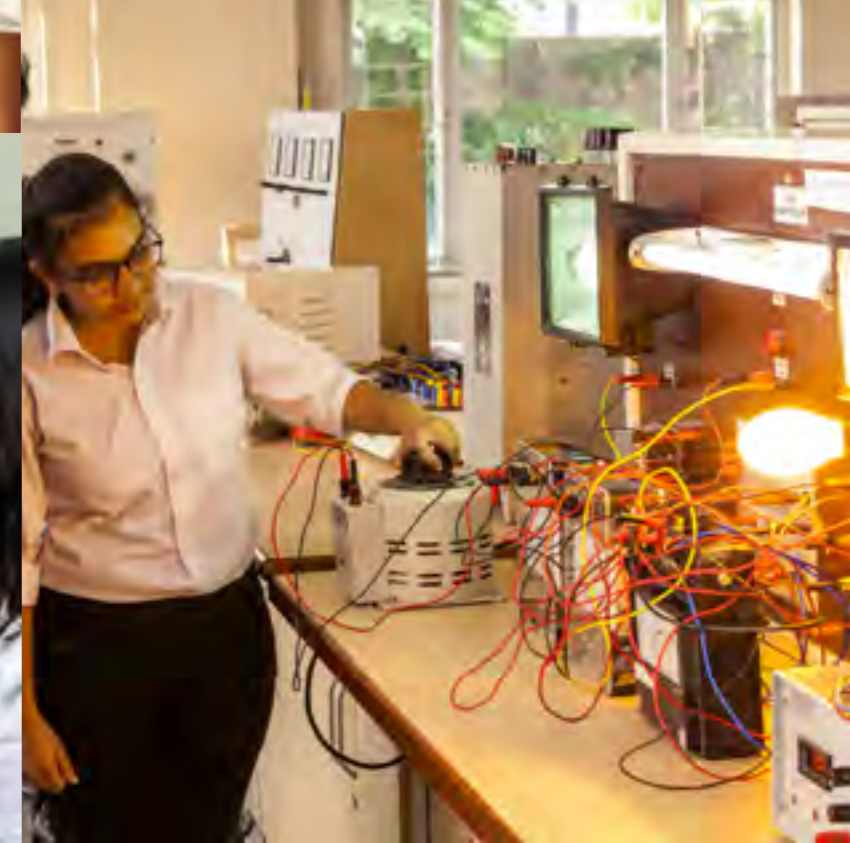
Vice Chancellor, JKLU

WE ARE REIMAGINING EDUCATION



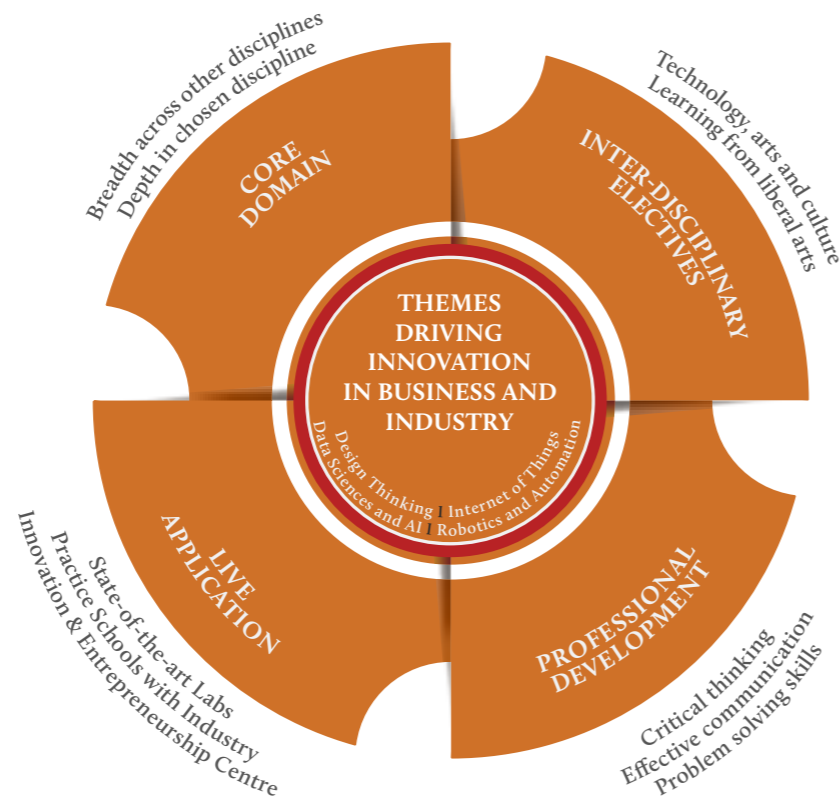
Embedding it with entrepreneurial and dynamic thinking. Seeding it with curiosity and technology. Introducing new ways of learning, as well as critical new skills to learn.

**Join us as we build the
country's most innovative
higher education institution.**



Learning @ JKLU

A carefully designed holistic approach built around innovative themes and learning-by-doing, that provides depth in core domain along with breadth of perspective to develop students into successful professionals.



A Future-Ready & Technology-led Education

Learn how to learn.

Learn how to read, write and think.

Learn to communicate and introspect.

Be life ready, not just job ready.



EXPERIENTIAL & STUDENT-CENTRIC LEARNING



Learn by doing, by experimenting, by applying classroom concepts to real-world challenges.



Collapse boundaries.

Learn from the best professors and a world-class curriculum, assisted by high-quality facilitators, practitioners and teaching assistants on campus.

Explore a larger and more exciting universe of courses & pedagogy.

MULTIDISCIPLINARY PERSPECTIVES

Gain and build insights about the world around you.

Develop perspective and awareness with modules,

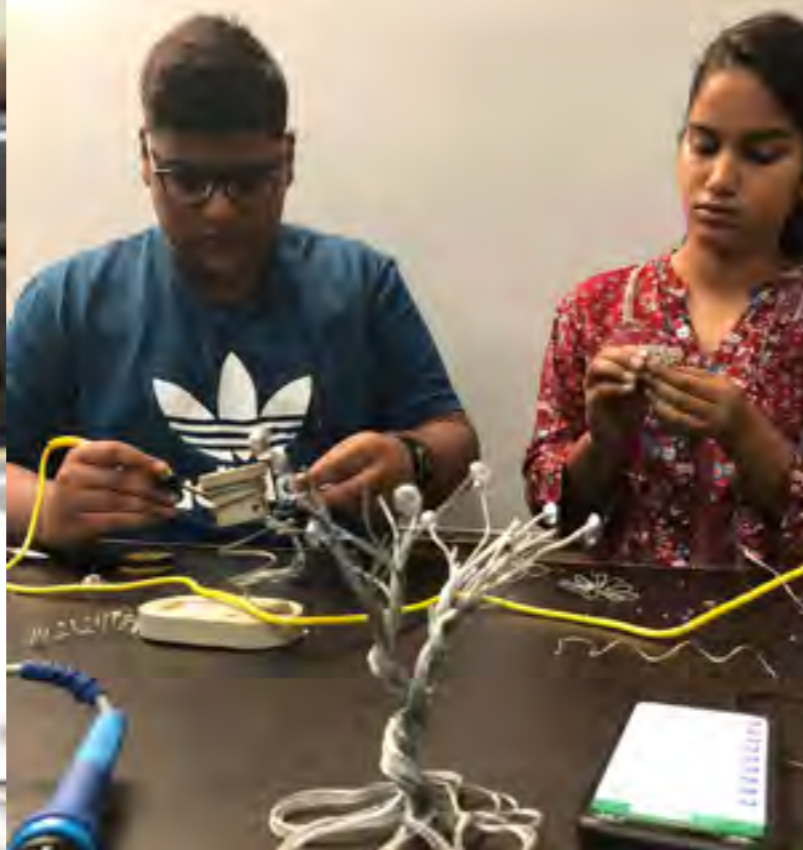
discussions and seminars on economics, politics, history, social science and development.

Delve into how politics, business and society are interlinked. Or, how philosophy influences technology.

Develop your perception.

AUTONOMY AND FLEXIBILITY

Enjoy the freedom, and the responsibility, to change your mind, to follow your curiosity or pursue a new interest. Take charge of your learning. Choose seamlessly from courses, concentrations and specialisations.



ACADEMIC INFRASTRUCTURE

Academic Laboratories

From basic workshops to specialized energy lab and innovation lab, JKLU has 54 state of the art labs to enable access to best tools for their projects and research.

Makerspace

Makerspace is a collaborative work space for making, learning, exploring and sharing. The purpose of makerspace at JKLU is to enable a user or individual to bring ideas to a tactile prototype stage so it can be tried and tested. Makerspace has a vast variety of industrial and high-tech tools to assist and enable users to create and manipulate a wide range of materials like wood, bamboo, plastics, acrylic, soft & hard metal in wire or sheet form.

Classrooms and Studios

From the iconic library building that is a source of pride for everybody at JKLU, the campus has well-appointed amphitheater-style seminar rooms, classroom studio outfitted with audio-visual equipment, video conferencing facilities and internet services. The academic infrastructure recognises that students today learn through a variety of media, and is well-prepared to foster these interactions.



INDUSTRY INTERACTIONS

Benefit from a close and sustained dialogue with industry. Leverage the advantages of mentorship, counseling and work opportunities.

Industry collaborations



IBM

Concentrations in Big Data & Analytics, Information Security & Cloud Computing



ISRO

Centre for IRNSS Navigation Receiver for Field Trial & Data Collection



Moody's Analytics

Concentrations in Financial Modeling and Analytics



Robotic Process Automation

Concentrations in Software Engineering and Robotic process animation



Microsoft IT Academy

Access to Microsoft IT academy tools and softwares

Industry Mentors

(Partial list)

Debraj Tripathy

Former Managing Director, Media-Com South Asia

Jay Dutta

Former Sr Vice President-UX, MakeMyTrip Group; Founder/Curator- DesignUp Conference; Venture Advisor-Product Design, SAIF Partners

Jishnu Changkoti

Stanford Seed Consultant, Ex VP, Sales & Marketing, Zybus

P Karthikeyan

Senior Interaction Designer, Intuit

Rajiv Kapuria

Global Business Leader & Board member Advisor, Deloitte USA

Raghava Rao

Vice President & CFO Amazon India

Ravi Chandran

Co-Founder & COO Ellora Health Technologies ; IIT Bombay, IIM Calcutta

Sanjay Srivastava

Board Of Director, Origins by Mahindra World City; IIM Calcutta, Harvard Business School.

Saurabh Deb

Chief User Experience Designer-Advanced User Experience Solutions,Samsung Design, NID Alumnus

Samarth Gupta

Technical Solutions and Industrial Design Specialist, Autodesk; M.Des, IIT Delhi, B.Tech, IIT Dhanbad

Vijay Deshpande

VP & Head of Human Resources, JKTyre & Industries

Kshitiz Anand

AVP-Design, Paytm

Anupam Deb

Head User Experience Design, Oracle

Sukanto Roy

Head - UX Design, Ernst & Young

A P Kannan

Head-IT, Delpot

ACADEMIC COLLABORATIONS



University of Florida, Gainesville, USA

Ranked 5th among Public Universities in the US



University of Massachusetts, Amherst, USA

Ranked 26th among Public Universities in the US



University of Birmingham, USA

Ranked 90th among QS World University Rankings



Edinburgh Napier University, UK

Ranked 1st among modern Universities in Scotland



ST. CLOUD STATE
UNIVERSITY

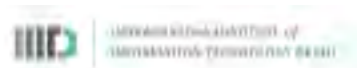
St. Cloud State University, Minnesota, USA

Ranked 95th among Midwest US Universities



University of South Carolina, USA

Ranked 54th among Public Universities in the US



GLOBAL NETWORK OF ACADEMIC RELATIONSHIPS



- University of Maryland, USA • Domus Academy, Milan, Italy • Ghent University, Belgium
- University of Capetown, South Africa • Cleveland University • The DO School, Berlin
- University of Antwerp, Belgium • University of South Carolina, USA
- Edinburgh Napier University, UK • University of East London, UK
- University of Oklahoma, USA • Amsterdam University of Applied Sciences, Netherlands
- Ball State University, USA • Bond University, Australia • Boston College, USA
- Cornell University, USA • Coventry University, UK • Culs University, The Czech Republic
- Federation University, Australia • Hanyang University, South Korea • Hong Kong University of Science and Technology, Hong Kong • Olin College of Engineering, USA
- Simon Bolivar University, Venezuela • St. Cloud State University, USA • St. Petersburg Polytechnic University, Russia • St. Petersburg State University, Russia • Syracuse University, USA • Széchenyi István University, Hungary • University College London, UK • University of Florida, USA • University of Houston, USA • University of Leeds, England • University of Massachusetts, USA • University of Birmingham, UK • University of Wales, UK



DISTINGUISHED VISITORS & AWARDEES

Regular Talks, Lectures and interactions with experts and leaders including **Manmohan Singh**, *Former Prime Minister of India*; **Pranab Mukherjee** *Former President of India*; **Kailash Satyarthi**, *2014 Nobel Peace Prize*; **Lord Meghnad Desai**, *Emeritus Professor London School of Economics*; **K. Kasturirangan**, *Padma Vibhushan*; & **Mrityunjay Athreya**, **Rajendra Singh Yadav**; Member of the Rajasthan Legislative Assembly, amongst many from different walks of life enrich our university community and give our students an opportunity to gain from & develop broad perspectives on issues that are important for the world.



Alasdair Roberts

Director, School of Public Policy and Professor of Political Science, University of Massachusetts Amherst

Anuradha Annaswamy

Senior Research Scientist Department of Mechanical Engineering & Director - Active Adaptive Control, MIT

M.H. Bala Subrahmanya

Professor, Indian Institute of Science

Santosh Mehrotra

Professor of Economics, Jawaharlal Nehru University; Former Director General, Institute of Applied Manpower Research, Planning Commission, Govt. of India

Mandayam A Srinivasan

Founding Director - Touch Lab, MIT USA; Director - UCL Touch Lab, London, UK; VAJRA Professor, IIT Madras, India.

Virender Singh Chauhan

Executive Chairman of National Assessment and Accreditation Council (NAAC)

Anil D Sahasrabudhe

Chairman, All India Council For Technical Education (AICTE)

Shubhashis Gangopadhyay

Founder & Research Director, India Development Foundation; Former Advisor to Finance Minister, Govt. of India

Amit Sheth

Founding Director - Artificial Intelligence Institute, University of South Carolina; Cofounder and Chief Advisor ezDI, LLC

Ray La Raja

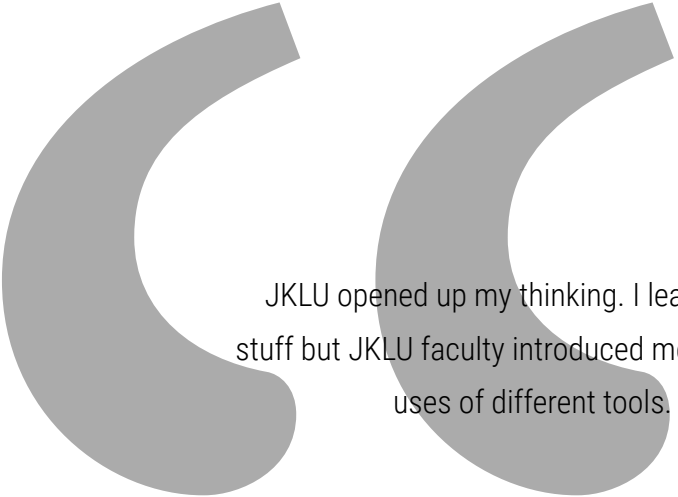
Professor, Political Science, University of Massachusetts Amherst

Sanjeev Mehta

Chairman and Managing Director - Hindustan Unilever Limited

Arundhati Bhattacharya

Former Chairperson of the State Bank of India



JKLU opened up my thinking. I learnt to learn from making mistakes. I was never into digital stuff but JKLU faculty introduced me new aspects of design like digital drawing along with the uses of different tools. I am very happy to be a part of JKLU's Institute of Design."

Khushi Garg | B.Des. Class of 2023

Student

.....

The best part about JKLU that I like, is the way students are being provided with the quality education and equal opportunities to interact with the respective faculty which helps the students in learning and boosting their confidence to get the best placements. JKLU gave me a good education and didn't let me hide behind the shadows and I will be always thankful for it."

Sanidhya Srivastva | B.Tech. Graduate, Class of 2019

Software Engineer| Mu Sigma

.....

As a programmer, there's nothing more important than getting the basics right. For me, solidifying my foundational knowledge of Data Structure helped me gain confidence as a programmer-pushing me to successfully apply for an internship of my choice.

Prakhar Saxena | B.Tech. CSE , Class of 2023

Student

"I was impressed by the infrastructure, facilities and more importantly passion of the leadership to give quality education through a variety of innovative methods of learnings.

Anil Sahsrabudhe | Chairman, All India Council for Technical Education (AICTE)

.....

"Inspirational place, I am sure it is going to do great work in education.

Vikas Satwalekar | Former Director of NID, Mentor, Graphic Designer

.....

"A commendable attempt at redefining education. May this attempt come out with something truly impactful & worthwhile."

Ambrish Kumar | IAS; Commissioner & Special Secretary, DoIT&C, Govt of Rajasthan



INSPIRING LEADERSHIP

Get inspired by a team of accomplished academics who are committed to bring to students the best that the world can offer

ACADEMIC LEADERSHIP

Dr. Dheeraj Sanghi

Vice Chancellor



Dr. Sanghi has been a Professor of Computer Science & Engineering at IIT-Kanpur. During his association of more than 27 years with IIT K he has held various leadership positions such as Dean of Academic Affairs etc. He has also been Director of LNMIT, Jaipur and Director; Punjab Engineering College

Dr. Sanjay Goel

Director, Institute of Engineering and Technology



An alumnus of IIT Delhi and BITS Pilani, Dr. Goel has over 32 years of inter-disciplinary work experience, including as faculty of Computer Science Engineering at NSIT Delhi, Head of CS&IT at JIIT, Director (Multimedia) at Indira Gandhi National Centre for the Arts (IGNCA) and National Informatics Centre, Delhi.

Prof. A. Balasubramaniam

Director, Institute of Design



Prof Bala has more than 30 years of experience of design industry and inter-disciplinary teaching. He is known for his work in both the industrial sector and the crafts sector having done projects with Crafts Council, DC Handicrafts and the UNDP. He has also been part of various institutions such as January Design; Oxfam; Great Britain, India; and Pride.

Dr. Ashwini Sharma

Acting Director - Institute of Management



As an accomplished faculty in the area of IT/IS, Data Analytics and General Management with over 20 years of teaching, research, training and consulting experience, He has also won Best Research Paper awards for three of his research publications at various National and International Conferences.



Sudhir Raniwala
Dean - Faculty Affairs



Jyotiprakash CR Naidu
Dean - Research and Development



Rajlakshmi Nayak
PhD (Mechanical Engineering), IIT Madras



Devanuj Kanta Balakrishnan
Ph. D., IIT Bombay; M. Des.; IIT Delhi
B. Arch, IIT Roorkee



Pushpendra Singh
PhD (Electrical Engineering), MNIT, Jaipur



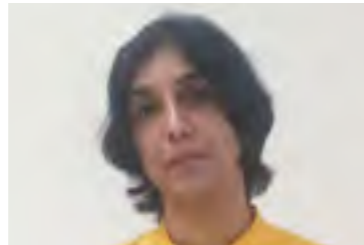
Dhruv Saxena
B.Des, IICD, Jaipur,
M.Des, Domus Academy, Milan, Italy



Umesh Gupta
Dean - Academic Affairs



Apoorv Bamba
University of Cape Town; Founder, Coach
& Catalyst for Entrepreneurship



Devika Kataria
PhD (Microelectronics), IIT Kanpur



Amit Kumar
MSc, Cleveland State University, USA;
Former Executive, The World Bank



Dr. Manushi Gupta
PhD (Mathematics) - IIT (BHU)



Alasdair Roberts
Director, School of Public Policy,
UMASS Amherst



Praveen Arora
PGDM - IIM Calcutta, B. Tech - IIT Delhi



Sonal Jain
PhD (Computer Science), Banasthali
Vidyapeeth



Afreen Gani Faridhi
Pursuing PhD - JNU Delhi,
M.Phil. - JNU Delhi



Kedar Sharma
PhD (Civil Engineering), IIT Kanpur



Upasana Singh
MBA, PhD, IIT Kharagpur



Anirudh Biswas
Red Dot Design Awardee; M.Des. NID
Ahmedabad; Visiting faculty - NID, Pearl
Academy; Former Designer - Godrej.



Ankur Kulshestra
Chartered Accountant, EMP, IIM Calcutta;
Former Manager, E&Y



Devendra Bhavsar
M.Tech, IIT Bombay



Alok Kumar
Researcher, Ghent University, Belgium
PhD (Network Science), IIIT Allahabad

INSPIRING FACULTY

Faculty Body is a combination of full-time academics committed to helping students flourish in a highly-qualified academic campus environment, and a wide network of visiting experts and professionals from leading universities, centres and organizations from India and across the world

Over 71% PhDs from Leading institutions

Over 36% alumnus of IITs, IIMs, NID & leading foreign institutions

ACADEMIC ADVISORY BOARD

To strengthen the academic environment at JKLU, we have an Academic Advisory Board of eminent academics who help ensure that the University's programmes and curricula are contemporary and future-ready.



Dr. Prabhu Aggarwal

Former Vice Chancellor of OP Jindal University
Former Professor of Management and Asst. Dean at
William & Mary University, USA President & Founder, Eduserve-global LLC

Dr. Rohit Verma

Founding Provost/ Chief academic Officer, VinUniversity; Professor, School
of Hotel Admin, Cornell SC Johnson College of Business, Cornell University



Dr. Vijay Kumar

Dean Penn Engineering and Professor
at University of Pennsylvania, USA



Prof Sunand Bhattacharya

Associate Vice Provost, Design and Innovation Strategies,
Boston College, USA;
Former Adjunct Professor, Olin College, USA

Dr. Sartaj Sahni

Distinguished Professor of Computer Science, University of Florida, USA;
Member of the European Academy of Sciences; Fellow of IEEE, ACM, AAAS
and Minnesota Supercomputer Institute, IIT Kanpur



Dr. Amit Sheth

Founding Director - Artificial
Intelligence Institute, University of South Carolina;
Cofounder and Chief Advisor ezDI, LLC



**Learning & Innovation
at the intersection of**

**DESIGN
ENGINEERING
MANAGEMENT**

INSTITUTE OF ENGINEERING & TECHNOLOGY

Pioneer of project-based cutting edge engineering education in the country.

Learn future-ready technologies

ROBOTICS & AUTOMATION

R

An extension of Robotics, Automation is termed as the next phase of the Industrial Revolution. It will create fresh avenues for businesses and individuals, and offers unprecedented opportunities to create and build intelligent systems that are smarter and more efficient.

ARTIFICIAL INTELLIGENCE & MACHINE LEARNING

AI

Together with Machine Learning, an important subset, Artificial Intelligence is at the forefront of technology today. Several industries, from medicine, banking and retail, are likely to be disrupted and transformed by the future of computing.

INTERNET OF THINGS

IoT

The rapid advancement of the internet, and the new reality it has shaped by bringing together a wide range of contexts, people, processes, data and technology is an exciting frontier of change today. It touches every aspect of our lives, and understanding this new world leads to greater innovation, progress and business.

DESIGN THINKING

DT

A human-centred approach to innovation, design thinking focuses on integrating the needs of society, technology and business. It encourages project-based pedagogy and effective frameworks for creative problem solving in all aspects of learning.

Options for multi-disciplinary majors, minors and concentrations in high-demand cutting edge areas

COMPUTER SCIENCE AND ENGINEERING

Students can do concentration in Data Science, Embedded Systems and IoT, Artificial Intelligence, Software Engineering and Robotic Process Automation (RPA) , Cloud Computing, Information Security and receive professional certifications from, Cisco, UI Path and other global organisations.

MECHANICAL ENGINEERING

The department boasts of the finest Automobile labs in the country with dynamic models and engine testing setups equipped with variable compression ratio testbeds. Robotics and Automation and Automobile Design and Engineering are other key areas of focus.

ELECTRONICS AND COMMUNICATION ENGINEERING

Students are offered a range of electives across Digital Systems and Communication and Signal Processing. The University has established facilities for smart grid testing and has collaborations with CEERI, Pilani and Texas Instruments.

PROJECT BASED LEARNING WITH



At the core of student-centric programmes at JKLU is the PROJECT BASED LEARNING methodology designed with the support of Olin College of Engineering, Boston, US. Olin is ranked among the top 3 undergraduate engineering programmes in the US in 2019.



Some of the Project based learning courses

Design & Prototyping

This course is a combination of different courses like Design Thinking, Engineering Graphics, Workshop Practices and AutoCAD where students are expected to empathize, define, ideate, prototyping and perform test and are trained to analyze an unknown situation through critical thinking and formulate it into a known problem so that solutions can be found.

Calculus for Engineers

This course introduces the basic elements of calculus and Applied Mechanics through two major engineering projects and a number of in class and out class activities to help the students in formulating and solving basic engineering problem.

OPPORTUNITY TO STUDY AT IIT

JKLU is providing an unique opportunity to study one semester at IIT. So Far, 14 students have benefited from this opportunity. Exchange of students, faculty, knowledge & researchers with national & international universities helps our students to get an edge in today's advancing world. We also collaboratively create multidisciplinary courses that nurture various skills. Get a chance to experience the semester exchange programme with University of Florida, St. CloudState University and IIIT Delhi.



"JKLU has provided me the opportunity to pursue one semester at IIT Gandhinagar under student exchange program. This program has helped me to gain depth knowledge on my subjects, as well as improving communication, networking skills, and providing me to work in the competitive environment at IIT . The teaching pedagogy of JKLU has helped me to set high goals for myself and strive for excellence in my field of study."

Jaya Sodani | B. Tech. (Batch 2020-24) Student

Student

INSTITUTE OF MANAGEMENT

The Institute believes in bringing industry into the classroom with extensive participation of senior practitioners in teaching and mentoring students, a blend of case studies, studios and projects. Students take advantage of courses in technology, design, liberal arts and critical thinking to develop the skills and entrepreneurial mindset required to succeed in their chosen career.



JKLU's BBA PROGRAMME

**A progressive
21st-century
programme that
aims to create
future global
leaders for
business
and society**

Emphasis on developing professionals
with industry-ready skills



Senior industry practitioners to guide
and counsel the students



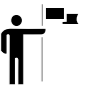
Exposing students to present-day business
scenarios with contextual curriculum



Courses Taught by Expert faculty
and senior practitioners



Multidisciplinary curriculum including
new-age theme



GLOBAL MASTERS PROGRAMMES WITH UPTO 50% SCHOLARSHIP

Making high quality global education accessible to motivated students

M.S. in Data Analytics and Computational Social Science

The Data Analytics program will help develop skills relating to data-driven decision-making, manipulating and analyzing large datasets, ethical data management, evaluative data interpretation, and clear communication of data results. Possible career trajectories include analyst and consulting positions in public policy, market research, public relations, corporate communications, population studies, and survey research.

M.S. in Resource Economics

The Resource Economics program provides training in empirical microeconomics and applied econometrics. It allows concentration in fields like Environmental and Natural Resource Economics, Empirical Industrial Organization, and Experimental and Behavioural Economics. Graduates will have the ability to analyse how consumers and firms make choices, how markets behave, and what data are needed to inform decisions.

Master's in Public Policy

The M.A. in Public Policy program brings together political science, economics, statistics, management, and other social science disciplines to shape policies and programs around the globe. Students gain the knowledge, skills, and practical experience to become leaders in the non-profit, public, or private sector while creating meaningful social change. Graduates of our program are prepared for careers as policy, research, program or budget analysts in federal, state or local government or non-profit or private organizations.

Each student got scholarship worth Rs. 20 lakhs last year from UMASS & Lakshmipat Singhania Education Foundation (LSEF).

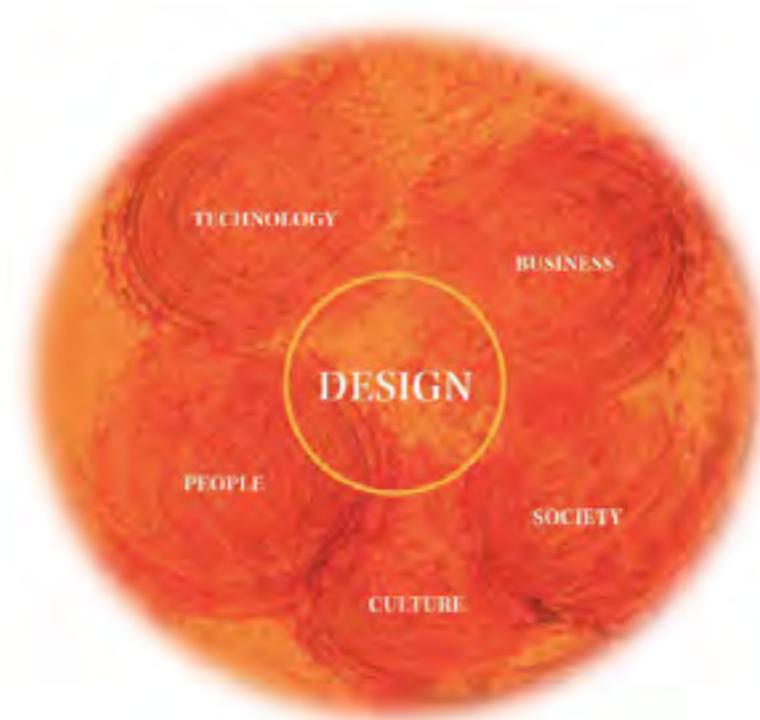
For details visit : www.lse.foundation

University of
Massachusetts
Amherst



INSTITUTE OF DESIGN

Sitting at the intersection of Technology, Business, Society, Culture and People, the curriculum at JKLU draws from how students learn at world's leading design schools.



Innovative 4-year undergraduate programmes in areas with high demand for talent

PRODUCT DESIGN

The Product Design program at JKLU uniquely combines both strategic and tactical competencies, from idea generation to commercialization, used to create a product design. Students will learn and practice systematic approaches to conceptualize and evaluate ideas, turning them into tangible inventions and products. They will experience combining art, science, and technology to create new products that people can use.

INTERACTION DESIGN

In this program, students will deepen their understanding of the core design discipline with a focus on interaction of users with products, services, devices and with each other. Computers, home appliances, mobile devices, apps, all have a focus on maximizing usability and the user experience. The goal of interaction design is to make the user's interaction as simple and efficient as possible, in terms of accomplishing user goals. This is one of the most sought after skills in today's technology driven businesses around the world.

INTERDISCIPLINARY DESIGN

The Interdisciplinary design program is a unique opportunity for students who want to understand the breadth of design and explore its various facets. It gives students a lot of flexibility to choose their courses and they can later opt to go deeper in areas that interest them or be highly valuable generalists who can work across a range of problems and situations.

INTEGRATED COMMUNICATION DESIGN

Integrated Communication design is the practice of planning and shaping a message in content, form and delivery. Communication designers craft effective and expressive ways to share ideas with others, using an approach focusing on both problem-solving and persuasion.

Academic Collaboration



Edinburgh Napier University, UK

Ranked 1st among modern Universities in Scotland



MP RANJAN-JKLU DESIGN RESOURCE CENTRE

The MP Ranjan - JKLU Design Resource Centre, situated at the heart of JK Lakshmipat University aims to make available the personal collection of books of prof. MP Ranjan, erstwhile principal designer at the National Institute of Design, Ahmedabad.

The centre has been built with the gorgeous collection from Ranjan's family. With over 1200 books on wide subject range, the MP Ranjan - JKLU Design Resource Centre aims to cater to the design community and everybody else interested in design.



THOUGHTSPOT

Thoughtspot is a stage that welcomes people from diverse disciplines and culture to share their unique stories, experiences and journeys. Being a global platform, Thoughtspot enables speakers, personalities and eminent professionals around the world, to connect for sharing ideas and stories to inspire others in turn. This initiative by JK Lakshmipat University has been taken to create more engagement with students, professionals, culturists, curators and academicians on a larger scale and providing them a platform for curating knowledge to increase visibility among global shapers and thinkers, establishing University's core values that mainly revolves around innovation and collaboration.

PLACEMENTS



JKLU In 2021-22

- ***Over 2 recruiting companies for every student***
- ***89% students already placed***
- ***Highest placement offered of Rs. 15.25 Lakhs***
- ***Average Salary of 7.05 LPA for B.Tech. & 7.22 LPA for MBA***
- ***4 Lakh minimum salary***

SOME OF OUR RECENT RECRUITERS



ATAL INCUBATION CENTRE - JKLU

Atal Incubation Centre-JK Lakshmi Pat University is established with support of AIM, NITI Aayog and JK Lakshmi Pat University in 2019. In last 3 years AIC-JKLU has supported 43 startups in various sectors including Fintech, Ed-tech, EVs, Agritech and more. It has been consistently rated as one of the top performing Incubation Centres in the AIM network. The AIC, due to its association with JKLU, is uniquely able to provide start-ups access to interdisciplinary resources such as high-end computing facilities, design facilities and engineering labs(33+ labs) coupled with expert resources in the areas of business, technology and design(43+ mentors & 33+ partners). In coming years, AIC-JKLU aims to build an eco-system to focus specifically on Longevity Economy & Energy.



Associated Investing funds & organisations :



Students have special and preferred access to AIC-JKLU resources

Mentor Associated

Apoorv Bamba
Co-Founder & CEO
of Ingenious Faces

Arun Singhal
Founder & CEO
at IR4Tech

Priyank Narayan
Founding Director - Centre for
Entrepreneurship at Ashoka University

Mahavir Pratap Sharma
Chair, TiE India Angels and RAIN

Madhup Bansal
CEO, True Wholesale

Tushar Vadera
Co-Founder, Set My Cart

Simran Grover
Founder and CEO at
Bask Research Foundation

Saurabh Trivedi
Co-Founder & Director
at Boudhik Ventures Pvt. Ltd.

Nitish Rao
Co-Founder & Director,
Celerix Technologies

Vivek Khandelwal
Founder, Work Readiness Hub

CENTRES OF EXCELLENCE

Creating opportunities for students to develop cutting edge capabilities, working with Industry and expanding horizons through research



CENTRE FOR COMMUNICATION AND CRITICAL THINKING

The CCCT at JKLU is a space that helps in creating a cadre of professionals who are gearing up to be problem solvers of tomorrow. It is one of the many innovations in technical and management education at the University and plays an important part in the learning journey of our students.

CCCT Partners with Students to help them:



Communicate effectively & with structure, both written & verbal



Identify, construct, evaluate & articulate arguments persuasively



Understand the connection, relevance and importance of ideas; appreciate different perspectives.



Reflect on the justification of one's own beliefs & values.

The Centre uses the constructs of liberal arts, scientific temper, written expression and interpersonal communication to inculcate and develop the ability for critical thought. It works with students alongside their programme through credit courses, workshops, one-on-one sessions and consultations to specific needs.

CENTRE FOR DESIGN RESEARCH

The Institute of Design has set up the Centre for Design Research to take on professional research and consulting projects in all areas of Design.

The Centre brings professional projects to the classroom and bring an academic rigour to professional assignments. It is in the cusp of a research lab, a professional studio and the classroom. The Centre works on assignments from industries and businesses that require an academic and research rigour. It conducts awareness workshops to all stake-holders to perpetuate the cause of design. It leads research activities in design for the public good. The centre Involves interested students in professional design assignments and documentation. The knowledge gained from the field is ploughed back into the curriculum.



CENTRE FOR DATA SCIENCES

The Centre for Data Sciences reflects JKLU's focus on emerging areas that are impacting business and work across sectors. The centre has competencies in developing Analytics Solutions and data sciences approaches in areas such as fraud analytics, sensor analytics, business intelligence, marketing analytics, predictive analytics, data visualization, IoT streaming analysis etc.



Life @JKLU



Located along the six-lane Jaipur - Ajmer expressway, within city limits of Jaipur The 30 acre campus in a modern, environmentally conscious and inviting space designed to help students live, work and play in a setting that is safe, productive and student centric. The Campus offers separate living facilities for male female students. The residential Management Development Centre is equipped to host industry practitioners, Visiting faculty and other guests.





MAJOR STUDENT CLUBS



Anuraad
(Music Club)



Meppens Squad
(Dance Club)



TheBrainmart
(Coding Club)



Inquisitors
(Quiz Club)



The Shade
(Photography Club)



The Musk Ink Literary
(Debate Club)



AIC
(Robotics Club)



Rangmanch
(Drama Club)



Fianza
(Finance Club)



Spornive
(Sports Club)



(Media Club)



Community
Development Club



Competitive Programming Club



Design Club



We, at JKLU, care about the mental health and wellbeing of our students, in addition to ensuring a good student life and academic life at the campus for them.

For this, we provide our students assistance for emotional wellbeing. We give students 24X7 access to **qualified counsellors**, free of cost, with complete confidentiality and anonymity. It helps students resolve their stress, create healthy relationships, develop a more focused approach towards achieving their goal, build confidence, and develop the ability to deal with the pressure of all kinds.



ADMISSIONS



COURSES OFFERED

B.Tech.

Computer Science and Engineering

Concentrations:

Data Science | Big Data and Analytics | Cloud Computing | Information Security | Software Engineering and Robotic Process Automation | Artificial Intelligence | Embedded Systems and IoT

Electronics and Communication Engineering

Concentrations:

Communication and Signal processing | Digital Systems

Mechanical Engineering

Concentrations:

Automation and Robotics | Automobile Design and Engineering

BCA

Concentrations:

Robotics Process Automation | Data Analytics | Cloud Computing and Cyber Security

B.Des.

Concentrations:

Product Design | Interaction Design | Interdisciplinary Design | Integrated Communication Design

BBA

Concentrations:

Entrepreneurship | Banking and Fintech

M.Tech.

Data Science | Automation and Robotics | Health, Safety and Environment

M.Des.

Concentrations:

Product Design | Interaction Design

PG Diploma

Analysis & Research

PhD

Engineering | Management | Applied Sciences | Design

SCHOLARSHIPS AND FINANCIAL AID

Scholarship based on Academic Performance in Class X & Class XII.

Upto 100% Scholarship on academic fee, in the first year of undergraduate study.

Scholarship based on National Level Entrance Exam i.e. JEE Mains for B.Tech., NID and UCEED for B. Des)

Upto 100% Scholarship on academic fee, in the first year of undergraduate study.



Scholarship based on exceptional performance in co-curricular activities (Sports, Cultural, Social Service etc.)

The scholarship level will upgrade by one level in case of exceptional achievements in any other sphere by the student.

Relaxation in Scholarship criteria for special cases

Relaxation of 2% in X and XII percentage and 5% in Jee percentile based different categories such as Girl Student, Wards of Defense Personnel, SC/ST/PH, Students from North-East and all UTs(except Delhi).

Scholarship For M.Tech.

Applicants qualifying GATE, will be eligible for 100% scholarship on Academic Fee.

Other Applicants with exceptional achievements will be eligible for 50% scholarship on Academic Fee.

On campus opportunities

The university also offers opportunities for on-campus assistantship and part-time jobs to exceptional students.

The scholarship offered by JKLU is applicable for the duration of the programme, subject to maintaining the required CGPA.

For more details visit www.jklu.edu.in

ELIGIBILITY CRITERIA

INSTITUTE OF ENGINEERING & TECHNOLOGY

B.Tech.

Eligibility : Minimum 70% aggregate in both class 10th and 12th for B.Tech
Class 10th Score: English, Maths, Social Studies, Science and fifth subject of applicant's choice.
Class 12th Score (for B.Tech.): Physics, Chemistry, Maths and English (total of four subjects)

M.Tech.

Eligibility : Undergraduate Engineering degree Minimum 60% marks
Qualifying exam : GATE score preferred

BCA

Eligibility : Minimum 60% aggregate in both class 10th and 12th (English, Maths, Social Studies, Science Compulsary)
For Class 12th compulsory subjects are English, Maths/Physics/Economics/Accountancy/ Computer Science/Informative Practices and two subjects of applicant's choice)

INSTITUTE OF MANAGEMENT

BBA

Eligibility : Minimum 60% aggregate in both class 10th and 12th (English Compulsary)

PG Diploma

Eligibility : Minimum 75% in an undergraduate (bachelor's) degree in any discipline from an accredited institution or University.

INSTITUTE OF DESIGN

B.DES.

Eligibility : Minimum 60% aggregate in both class 10th and 12th
Class 10th English, Maths, Social Studies, Science and fifth subject of applicant's choice.
Class 12th English and three subjects of applicant's choice (total of four subjects)

M.DES.

Eligibility : Minimum 50% marks or equivalent CGPA bachelor's degree equivalent in any discipline from a recognized university.

For more details visit www.jklu.edu.in

HOSTEL*

Non AC room** : Rs. 65,000 per year
AC room** : Rs. 80,000 per year
Mess advance : Rs. 52,000 (To be adjusted as per actuals) per year

TRANSPORT FACILITY

: Rs. 15,000 per semester

Applicable if the student wishes to avail the JKLU transport facility from Jaipur city to JKLU campus on specified routes

-
- * Hostel rooms are on twin sharing basis. Hostel Charges are subject to yearly revision.
 - ** Utility charges of Rs. 5000/- for regular room and Rs. 20000/- for AC room extra.

Note: Refundable Caution Money of Rs.10,000 and Hostel Security Deposit of Rs. 5,000 would be payable along with first year's fees, It is refundable at the time of leaving the Hostel.

OUR LEGACY

Our optimism for the future is guided by, and built on, the strong foundations of the past. The JK Organisation is one of India's most respected nation builders and has a proud history of being committed to India's potential for growth and progress for nearly 125 years. It has successful businesses across a range of industries, including JK Tyre, JK Paper, JK Lakshmi Cement, JK Agri Genetics and JK Fenner India. JKLU is a proud member of this heritage, as a philanthropic initiative of the Lakshmipat Singhanian Education



Led by its key architect, the Late Lala Lakshmipat Singhanian (1910-1976), who was inspired and driven to create India's intellectual capital, JK Organisation has been at the forefront of philanthropic initiatives in education and healthcare. Late Harishankar Singhanian (1933-2013) ably carried forward the legacy of inspiration and commitment to education, as President (Chairman) of the JK Organisation, as well as the Chancellor of JKLU.

The vision and mission of the founders continues to be the bedrock of the university's ethos and its promise to play a significant role as a nation builder.



“At JKLU, we want to bring together best-practices from academia around the world and many innovations that I have seen to be successful in my experience of creating world-class institutions in India.”

Dr. Pramath Raj Sinha

Member, Board of Management, JKLU

Founding Dean, ISB Hyderabad; Founding Trustee, Ashoka University

“We are building a university where students are at the centre of everything we do. Our faculty and administration are continuously innovating and our academic facilities, curriculum, residences are rapidly evolving to help our students become successful in life.”

Asheesh Gupta

Pro Vice-Chancellor

Former Consultant at McKinsey & Company and Director of McKinsey's Knowledge and Research

Centres in India



BOARD OF MANAGEMENT

Shri Bharat Hari Singhania

President, JK Organisation
Chancellor, JK Lakshmiapat University

Dr. R.P. Singhania

Chairman & Managing Director
JK Tyre & Industries Ltd.
Pro Chancellor, JK Lakshmiapat University

Prof. M.S. Ananth

Former Director IIT Madras
Chairman, IIITDM, Kancheepuram

Shri H.P. Singhania

Vice Chairman & Managing Director
JK Paper Ltd.

Shri Pratip Chaudhuri

Former Chairman
State Bank of India

Shri S.K. Roongta

Former CMD, Steel Authority of India

Shri Surendra Malhotra

Former MD, Orissa Synthetics Limited

Smt. Vinita Singhania

Vice Chairman & Managing Director
JK Lakshmi Cement Ltd.

Shri S.A. Bidkar

Chief Financial Officer
JK Lakshmi Cement Ltd.

Dr. Pramath Raj Sinha

Founding Dean, ISB Hyderabad
Founding Trustee, Ashoka University
Founder & MD, 9.9 Group

Shri Sanjay Jain

Former Managing Director
Global Capability Network, Accenture

Shri Ajay Shankar

IAS
Former Secretary (Industry) to Government of India

Mrs. Suchi Tyagi

IAS
Commissioner College Education,
Government of Rajasthan

CONTACT INFO

Campus

Near Mahindra SEZ, Ajmer Road,
Jaipur - 302026, Rajasthan, India

Admission Office

Helpline No. : +91 830 222 3344
: +91 78694 56540
Phone : +91 141 7107 530/31
Email : admissions@jklu.edu.in

Administrative office

Phone : +91 830 2223 344





Contact No. - +91 - 8302 223 344

www.jklu.edu.in

A Philanthropic initiative of the 125-year old JK Organisation



JK LAKSHMI

